

DDL-9000BR

Direct-drive, High-speed, 1-needle, Lockstitch Machine with Automatic Thread Trimmer [Needle thread clamp / Shorter-thread remaining type]



- Remaining Thread Length is 3mm Consistently
- Thread Clamp Device Reduces The Birds-Nest and Allows for Smoother Operation
- Low Power Consumption

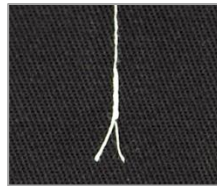


DDL-9000BSS/X73199

The Length of The Remaining Thread Has Been Reduced to 3mm Consistently.

The machine adopts a new thread trimming method where trimming takes place directly below the throat plate. As a result, the length of thread remaining on the material is shortened, thereby eliminating the need to manually cut the remaining thread.

Conventional lockstitch machine with automatic thread trimmer



Shorter-thread remaining type



*Remaining length of thread varies with sewing conditions

This new thread trimming method provides the DDL-9000BSS/X73199 with unrivalled consistency and stability in the remaining thread length unlike other comparative machines on the market.

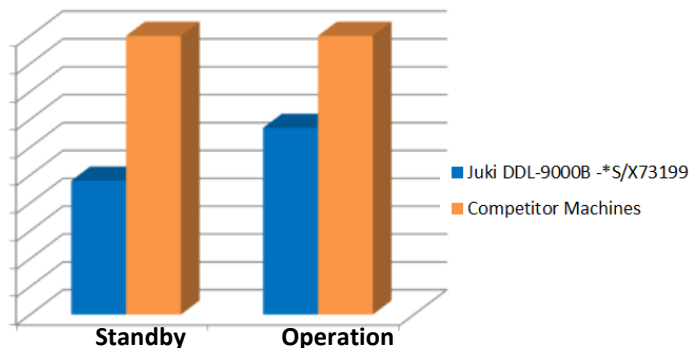
LED Light

This model comes equipped with an LED light as standard to avoid shadows on the material and better visibility to the operator. Adjustable brightness is one of the main functional benefits of this feature.

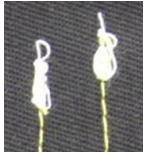


Power Consumption

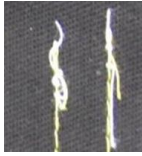
This model has been designed to consume far less power versus comparable models of other makes (48% in standby and 67% during operation). This leads to a large reduction in factory costs over time



Thread Clamp Device Reduces The Birds-Nest and Allows for Smoother Operation.



Wiper Device



Thread Clamp Device

This device applies pressure to the thread as the needle is lowered into the fabric at the initial stitch. This pressure keeps the thread close to the needle head and results in a smaller birds nest on the bottom of the material.

Other benefits of this device include:

- ✓ A shorter remaining thread after the first stitch
- ✓ Noise Reduction
- ✓ Ability to apply special foot
- ✓ Occupies less space
- ✓ Safer (compared to wiper device)
- ✓ No Soft Start Needed

The device can clamp the thread and achieve max. speed from the start of sewing allowing the operator to lean a comfortable rhythm without having to slow the operation.



*This models allows for reverse feed to be achieved by both a thumb switch and a push-down lever, providing easier operation than comparative machines from different brands.

Specifications

Model Name	DDL-9000BMS/X73199	DDL-9000BSS/X73199
Application	Medium-Weight	
Lubrication System	Semi-Dry Type	Minute-Quantity Lubrication
Max. Sewing Speed	5,000 sti/min (*at any stitch length)	
Max. Stitch Length	4mm	
Lift of the Presser Foot	By Knee: 15mm	
Needle	DBx1(#11)#9~#18, 134(Nm75) Nm65~Nm110	